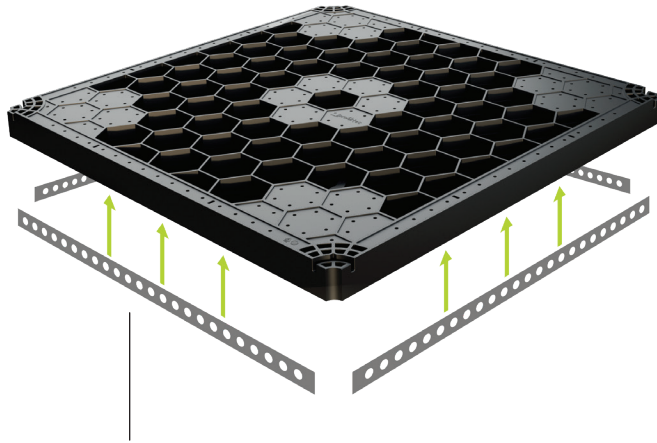


Uptec anti-fragmentation tray

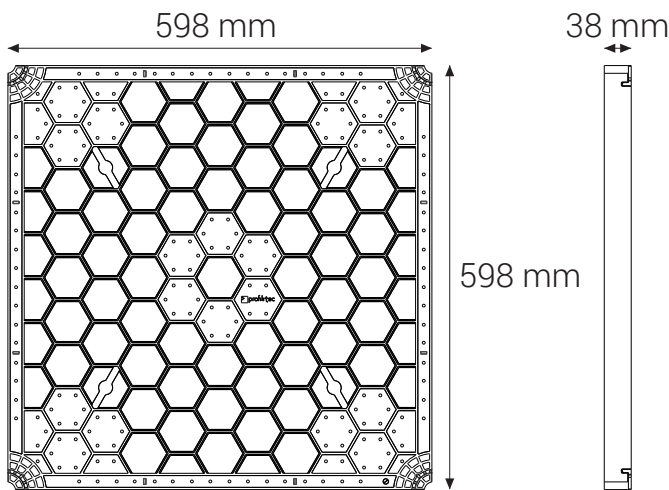
PRODUCT DESCRIPTION



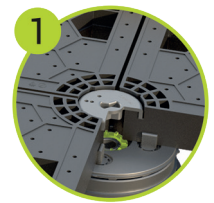
Four reinforced steel reinforcement profiles are strategically placed on all sides of the SUPATRAY, enhancing its load-bearing capacity and minimizing bending. These reinforcements come pre-assembled, saving precious time and simplifying the installation process.

Uptec SUPATRAY the pinnacle of innovation in raised floor solutions, meticulously engineered to surpass all expectations. It is designed to provide unparalleled versatility and durability, setting a new standard in safety and performance. SUPATRAY features a honeycomb structure, designed to offer a robust substructure that not only safeguards against injuries in the event of tile breakage but also ensures exceptional stability. With dimensions measuring 598x598x38mm, SUPATRAY creates a solid foundation for any raised floor project. Made with recycled ABS plastic material, SUPATRAY withstands the test of time and the most challenging weather conditions. In addition four galvanized steel reinforcement profiles, are strategically placed on all sides of the SUPATRAY, enhancing its load-bearing capacity and minimizing bending. These reinforcements come pre-assembled, saving precious time and simplifying the installation process. SUPATRAY creative freedom knows no bounds. Its guarantees the creation of stable and flush substructure, allowing to unleash imagination and creativity for installations including various tile sizes and patterns with ease.

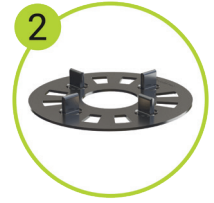
TECHNICAL FEATURES



Article	Material	pcs/pck
SUPATRAY	Recycled plastic ABS	56
Article	Material	pcs/pck
SUPATRAYLOCK	Recycled plastic ABS	24
Article	Material	pcs/pck
SUPATRAYTAB2	Recycled plastic ABS	240
SUPATRAYTAB4	Recycled plastic ABS	240



Locking Disc
SUPATRAYLOCK



SUPATRAYTAB for 2mm
and 4mm joints

ADVANTAGES



Ultimate Safety

Unmatched protection against injuries in the event of tile breakage, providing peace of mind.



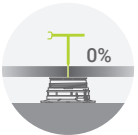
Indestructible Strength

Engineered with four galvanized steel profiles, rendering it highly resistant against structural challenges.



Effortless Installation

Revolutionizes installation with convenient 60x60 cm dimensions, drastically reducing time and labor costs.



Perfection in Precision

Achieves perfectly level flooring surfaces and offers possibility for pedestal height adjustment using the SUPAK multifunctional key for absolute precision.



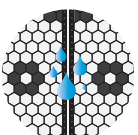
Limitless Creativity

Unleashes boundless creativity, enabling the creation of multiple installation patterns with various tile sizes.



Tailored Adaptability

Can be easily cut to offer individual customization options for curves, recesses, and small edge sections.



Efficient Drainage

Guarantees drainage efficiency, ensuring rapid water dispersal through joints and its cavities.



Stability Standard

SUPATRAYS securely connected together by the SUPATRAYLOCK plastic locking disc, ensuring uniformity and maximum stability.



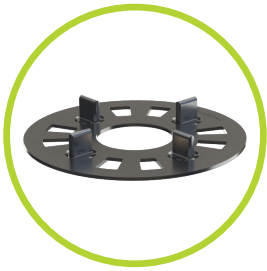
Sustainability

SUPATRAY incorporates recycled content and embraces full recyclability, leading the charge towards a greener future.

INSTALLATION

- 1. Installing the uptec pedestals:** Begin by placing the pedestals on your installation surface and adjusting them to your preferred height. To increase the assembly's load-bearing capacity add a central pedestal to each tray.
- 2. Assembling the substructure:** Next, position the trays on top of the pedestals, ensuring they align with the pedestals' tabs. Achieve precise leveling of the trays using the adjustment key **SUPAK**.
- 3. Flooring installation:** Now, install your choice of flooring elements, such as porcelain, stoneware or marble. Be sure to place the **SUPATRAYTAB** beneath the corners, serving the dual purpose of creating gaps and aligning the flooring elements. Fine height adjustments are still possible after full installation using the system's **SUPAK** key.

ACCESSORIES



SUPATRAYTAB



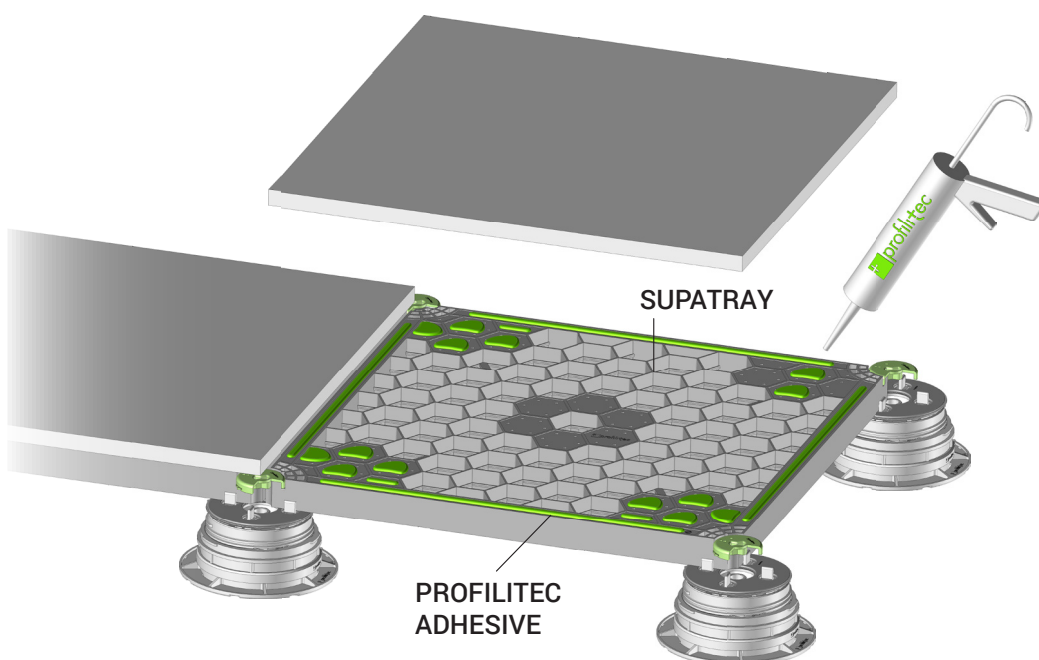
SUPATRAYLOCK
(optional)

ANTI WIND UPLIFT SYSTEM

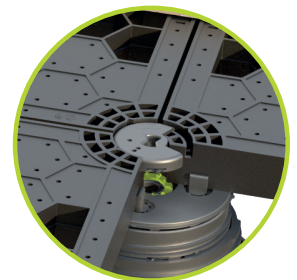
The **SUPATRAY** anti wind uplift system consists of a tray equipped with three adhesive tracks: perimeter, center, and auxiliary sections. This system also includes a locking disc (**SUPATRAYLOCK**) and must be assembled using the Profilitec adhesive.



Locking Disc
SUPATRAYLOCK



OPEN



BLOCKED